



AZTEC® Merchandisers &
Under Counter Cabinets
PRODUCT CATALOGUE

In this catalogue, Westmount is showing a small representation of exciting and chosen products used for cabinets and merchandisers. In addition Westmount carries a wide variety of other products not shown in this catalogue. Feel free to contact us to discuss any retail solutions you may need.

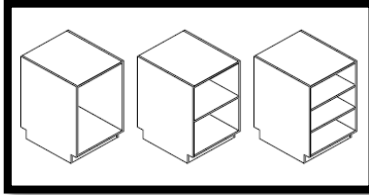
WE ARE YOUR FIRST CALL PROVIDER

1-800-561-1951

or

780-424-8950

A



2ft Open Counter

24" w x 36" h x 28" d. Fixed shelf available for additional fee.

Part Number: 91-UCC-A0

Detail: No shelf

Part Number: 91-UCC-A1

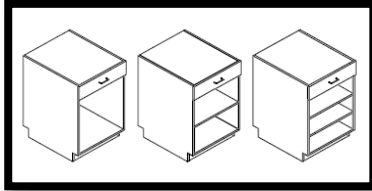
Detail: 1 shelf

Part Number: 91-UCC-A2

Details: 2 shelves

Colour: White

B



2ft 1 Drawer Counter

24" wide x 36" high x 28" deep.

Part Number: 91-UCC-B0

Detail: No shelf

Part Number: 91-UCC-B1

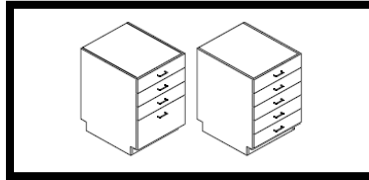
Detail: 1 shelf

Part Number: 91-UCC-B2

Details: 2 shelves

Colour: White

C



2ft Counter

24" wide x 36" high x 28" deep.

Part Number: 91-UCC-C4

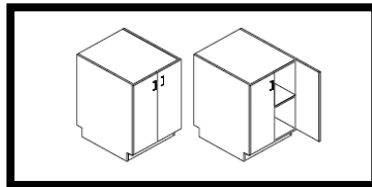
Details: 4 drawers

Part Number: 91-UCC-C5

Details: 5 drawers

Colour: White

D



2ft 2 Door Counter

24" wide x 36" high x 28" deep.

Part Number: 91-UCC-D0

Detail: No shelf

Part Number: 91-UCC-D1

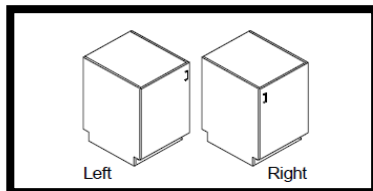
Detail: 1 shelf

Part Number: 91-UCC-D2

Details: 2 shelves

Colour: White

E



2ft Single Door Counter

24" wide x 36" high x 28" deep. Ideal for locks (sold separately).

Available in left or right opening.

Part Number: 91-UCC-E0

Detail: No shelf

Part Number: 91-UCC-E1

Detail: 1 shelf

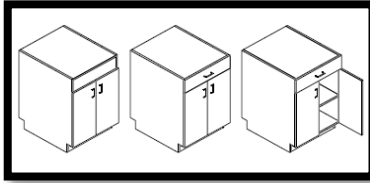
Part Number: 91-UCC-E2

Details: 2 shelves

Colour: White

NOTE: *Door and Drawer fronts available in specialty colours upon request. Minimum order required.

F



2ft Short Doors Counter

24"wide x 36"high x 28"deep.

Part Number: 91-UCC-F0

Detail: No drawer

Part Number: 91-UCC-F1

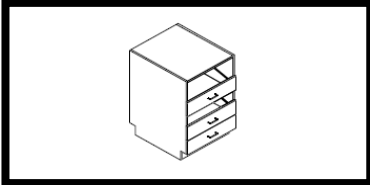
Detail: 1 drawer

Part Number: 91-UCC-F2

Details: 1 shelf & 1 drawer

Colour: White

G



2ft 2 Vial, 1 Regular Drawer Counter

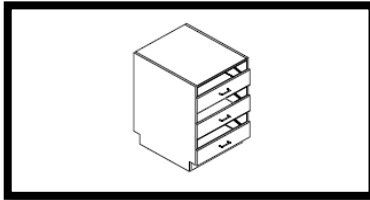
24"w x 36"h x 28"d. Comes with two dividers per drawer.

Part Number: 91-UCC-G

Details: 2 vial & 1 reg. drawer

Colour: White

H



2ft 3 Vial Drawer Counter

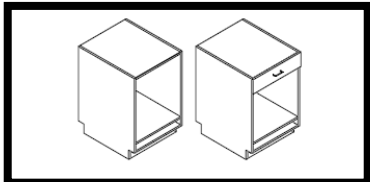
24"w x 36"h x 28"d. Comes with two dividers per drawer.

Part Number: 91-UCC-H

Details: 3 vial drawers

Colour: White

I



2ft Sliding Shelf Counter

24"w x 36"h x 28"d. Ideal for printers or computers

Part Number: 91-UCC-I0

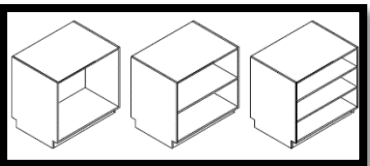
Detail: No drawer

Part Number: 91-UCC-I1

Detail: 1 drawer

Colour: White

J



3ft Open Counter

36"wide x 36"high x 28"deep.

Part Number: 91-UCC-J0

Detail: No shelf

Part Number: 91-UCC-J1

Detail: 1 shelf

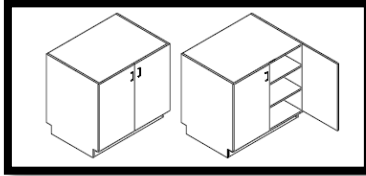
Part Number: 91-UCC-J2

Details: 2 shelves

Colour: White

NOTE: *Door and Drawer fronts available in specialty colours upon request. Minimum order required.

K



3ft 2 Doors Counter

36"wide x 36"high x 28"deep.

Part Number: 91-UCC-K0

Detail: No shelf

Part Number: 91-UCC-K1

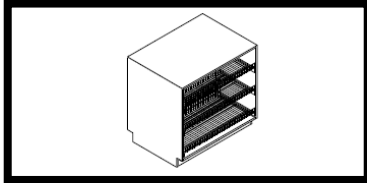
Detail: 1 shelf

Part Number: 91-UCC-K2

Details: 2 shelves

Colour: White

L



38.5" Counter, 3 Metal Vial Drawers

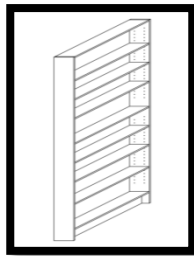
38.5"wide x 36"high x 28"deep.

Part Number: 91-UCC-L

Detail: 3 metal vial drawers

Colour: White

NOTE: *Door and Drawer fronts available in specialty colours upon request. Minimum order required.



Drug Bay Unit

Includes six 7.75"d adjustable shelves & one centre fixed shelf.

Part Number: 91-D07A

Dimensions: 4ft x 82"h x 8.5"d

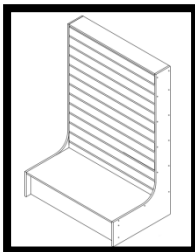
Part Number: 91-D07

Dimensions: 3ft x 82"h x 8.5"d

Part Number: 91-D07B

Dimensions: 2ft x 82"h x 8.5"d

Colour: White



End Merchandiser

Includes one 8", four 10" and two 12" shelves.

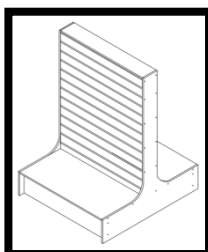
Part Number: 91-R01-M

Dimensions: 3ft wide x 54"h.

Part Number: 91-R02-M

Dimensions: 4ft wide x 54"h.

Colour: Maple



Island Gondola

Includes eight 10" shelves and four 12" shelves.

Part Number: 91-R03-M

Dimensions: 4ft wide x 54"h.

Part Number: 91-R04-M

Dimensions: 3ft wide x 54"h.

Colour: Maple